



IAS install guide

www.itechno.com

30/10/2008

Copyright 2006-2008 IMPACT TECHNOLOGIES

IMPACT TECHNOLOGIES reserves the right of modifying the contents of this document at any time. Even though the exactness of information it contains has been checked carefully, IMPACT TECHNOLOGIES shall not be liable for the possible consequences of any errors or omissions. This document shall not be reproduced or translated fully or partly without the written permission of IMPACT TECHNOLOGIES.

Printed in France

Trademarks registered

Itium is a registered trademark of IMPACT TECHNOLOGIES.
The other trademarks and product names are trademarks registered by the respective companies.

Ref.	Titre	Rev.	Date
IAS-install	IAS installation guide	1.6 rev A	30/10/2008

www.itechno.com

30/10/2008

Sommaire

Introduction 4
Update from a previous version 5
Installation..... 5
Uninstall 8
Appendices..... 8
 Advanced installation..... 8

Table des illustrations

Figure 1 : setup.exe 5
Figure 2 : les composants 6
Figure 3 : choix du dossier d'installation..... 7
Figure 4 : le dossier d'installation..... 7



Introduction

This document describes the installation of Itium Administration Services (a.k.a. IAS) software. The current version can manage Itium thin clients running Windows XPe, Windows CE or Linux ITL.

IAS is made of the following parts:

- The SQL Database of the Itiums.
- The Repository where are stored the images of Itiums. It's a FTP server actually. By default, Filezilla Server is installed.
- The Engine which monitors the running Itiums.
- The Console, the GUI for IAS; it can be installed on several machines.

All of these parts can be installed on different server it that suits you.

Moreover, IAS relies on technologies provided by the following software:

- SQL Server Express 2005 SP2
- Framework .Net 2.0
- Windows Installer 3.1
- Runtimes Visual C++ 2005

They are freely distributable and are the property of Microsoft Corp ®. They are provided on the distribution media.

Notes:

- Supported systems: Windows 2000, Windows XP, Windows 2003, Windows Vista
- Space required: about 350 Mo.

Before you install IAS:

- Make sure you have administrative rights on the machine where you are installing IAS.
- Install the most current Service Pack and all the updates for your system.
- Run the setup from a local drive, remote drives (e.g. network shares) are not supported.

Update from a previous version

If the previous version is between 1.3 and 1.5, please proceed this way :

- Uninstall the older version through control panel “Add or remove programs”. Caution : do not uninstall “IAS Prerequisites”
- Install the new version in the same directory as the previous one.

The configuration of IAS and the content of the Database (including the Groups and the scheduled actions) will be preserved.

From version 1.6 of IAS on, it won't be necessary to uninstall a previous version before installing a new one. The new elements will simply replace the older ones.

Installation

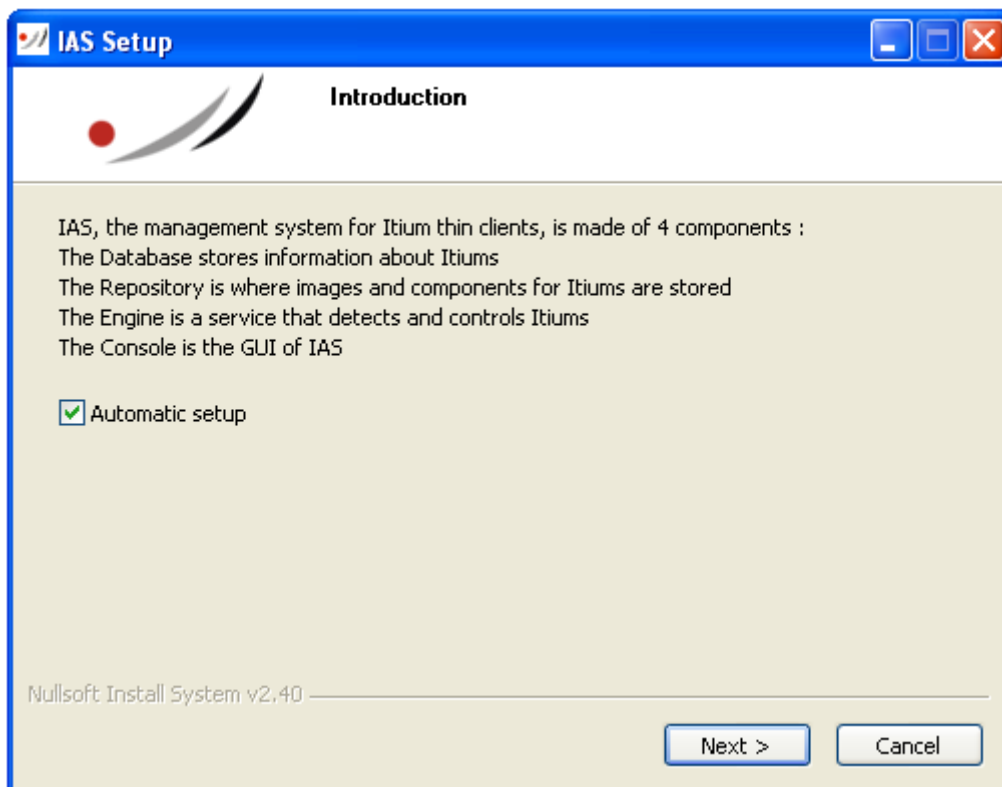
Launch “setup.exe” from the root of the distribution media.

NB: the installation must be run by a user with local administrative privileges on the PC.

If you are running Windows Vista, clic with the right button on “setup.exe” and choose “Execute as administrator”.

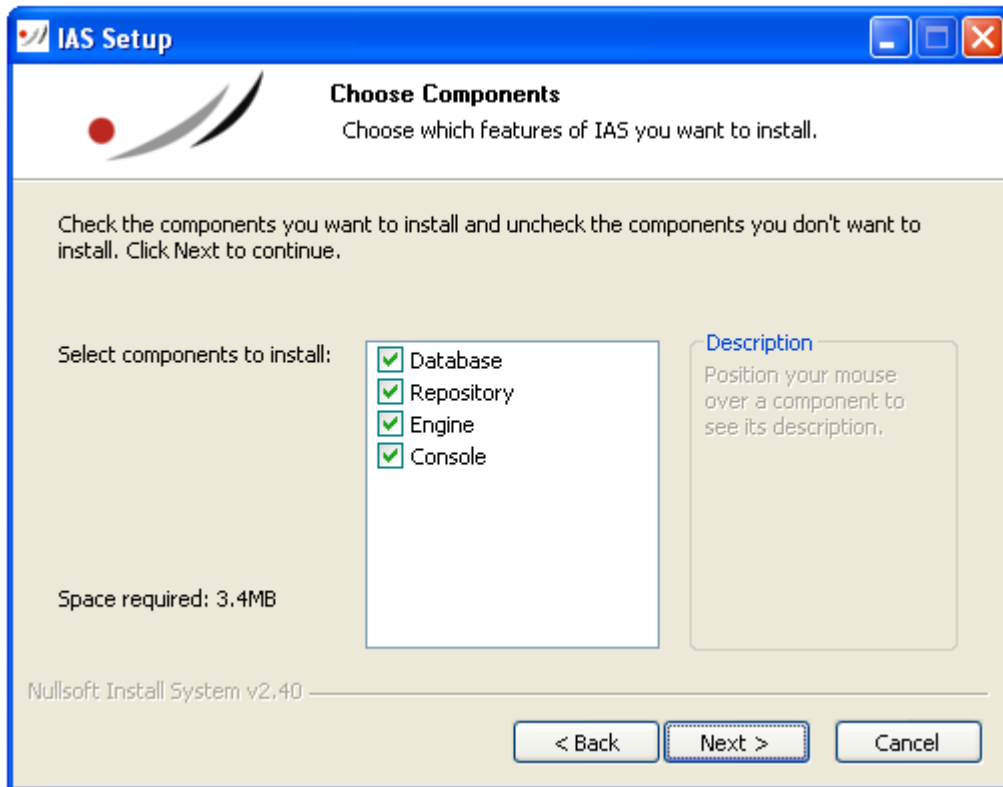
This program will install and configure the different parts required by IAS. Windows' firewall will be configured as well.

Figure 1 : setup.exe



Clic on “Next”.

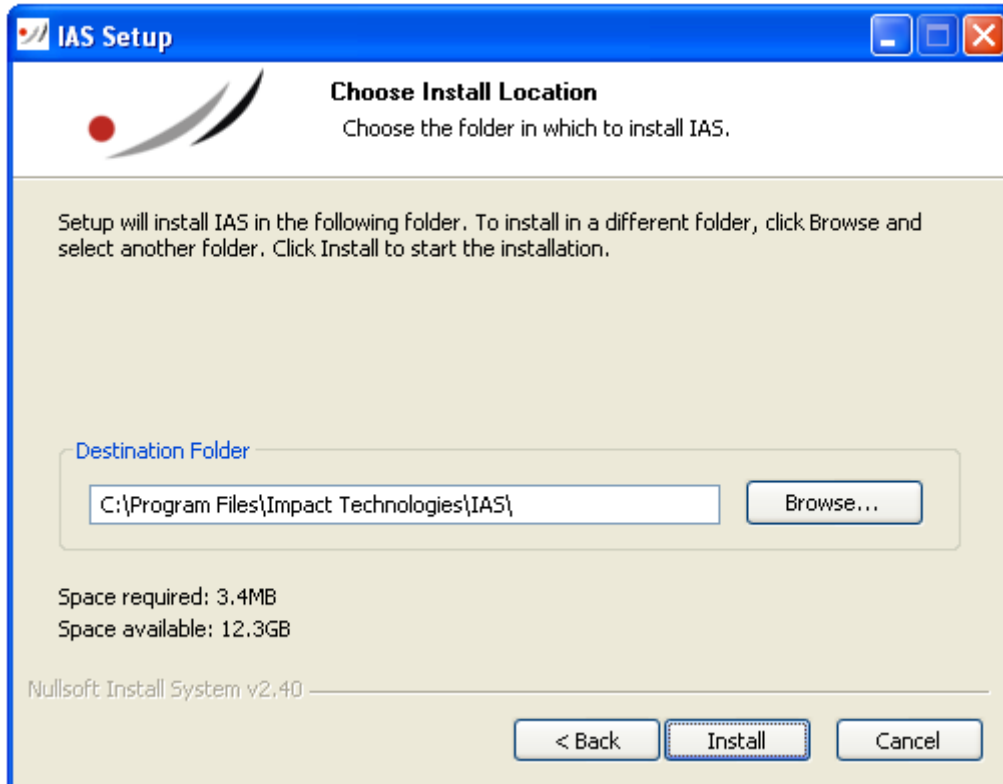
Figure 2 : the components



By default, the setup program installs all the four components.
Click on "Next".

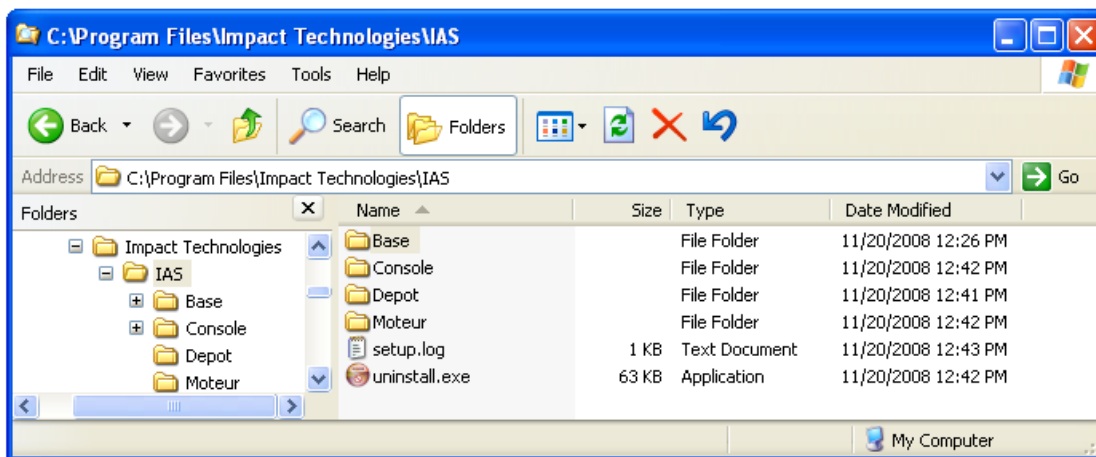
The setup program then asks the install location.

Figure 3 : choose the install Location



Choose the install location and press “Next”, the installation process begins. No more user action will be required. Beware, some steps are quite long (installation of .Net 2 and SQL Express).
When the installation is complete, the install location looks like this :

Figure 4 : the install location



Component	Description
Base	additional software to configure the Database
Console	IAS’s GUI
Depot	the place where Itiums’ images are stored
Moteur	IAS’s engine
setup.log	log file of the installation
uninstall.exe	the uninstall program

Run the Console from the “Impact Technologies” directory of the Start menu

Uninstall

Use control panel “Add or remove programs” or the uninstall.exe program that was created during installation. After uninstall, some elements stay on the machine:

Après la désinstallation, certains éléments restent sur la machine :

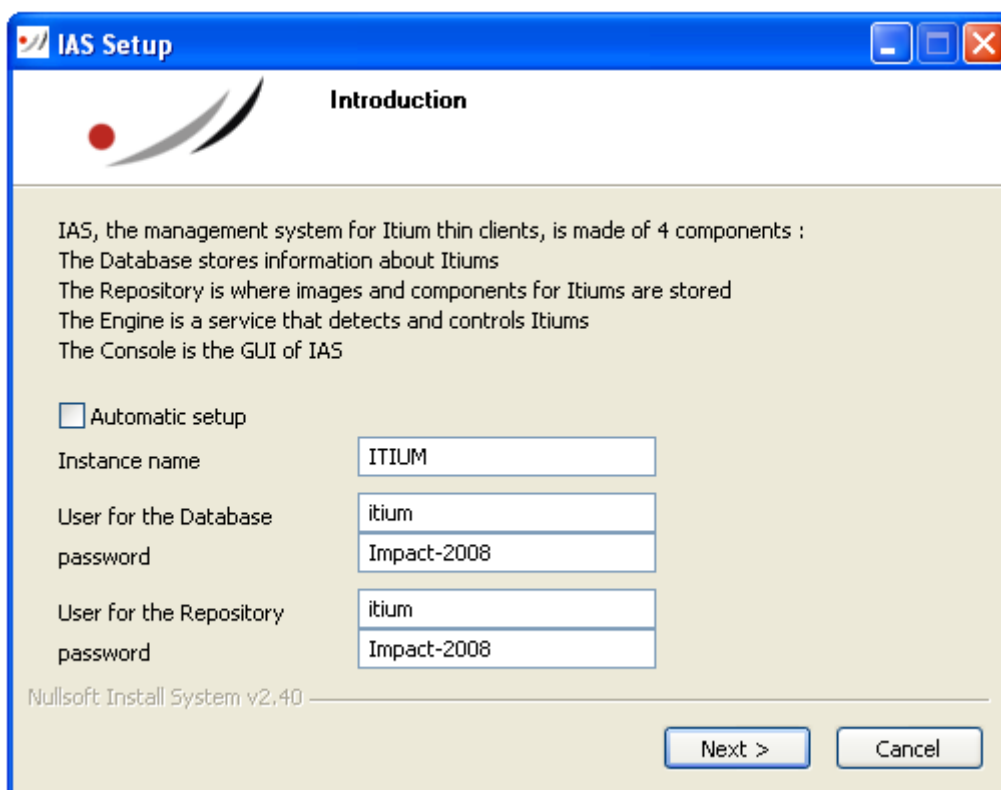
- “Microsoft .NET Framework 2.0”, “Microsoft Visual C++ 2005 Redistributable” et “Microsoft SQL Server 2005”. They are used by many software and removing them can make your computer unstable. Uninstall them only if you’re sure that you don’t need them anymore. If you do so, remove “Microsoft .NET Framework 2.0” in the last.
- The SQL Express instance and the data within.
- Directory “Depot” and the images it contains
- File “ADF.settings.xml” (in directory “Console”) where the configuration of the Console is kept.

Appendices

Advanced installation

If you uncheck the “automatic setup” in the first page, new options appear :

Figure 5 : advanced installation



If SQL Express or SQL Server is already installed on the computer with an instance names ITIUM, or ITIUM1, ITIUM2, etc, the setup program will try to use this instance. If not, a new instance will be created with the name entered on “instance Name” (by default: “ITIUM”).

In both cases, a database user will especially be created for IAS. The name and the password of this user can be chosen here (by default respectively “itium” and “Impact-2008”).

If no FTP Server is detected on the computer, the setup program will install Filezilla FTP Server in its own directory (by default C:\Program Files\FileZilla Server) and a special IAS FTP user¹ will be created. The name and the password of this user can be chosen here (by default respectively “itium” and “Impact-2008”). The directory associated to this user is the sub-directory “Depot” in the install location (see Figure 4 : the install location).

If a FTP Server is detected, nothing more will be done about the Repository and you’ll have to configure yourself in the Console (menu “Repository, Configure”).

NB : characters “@”, “;” and “.” are ill-advised in the password.

¹ NB : It’s a user internal to FileZilla and not a Windows user.