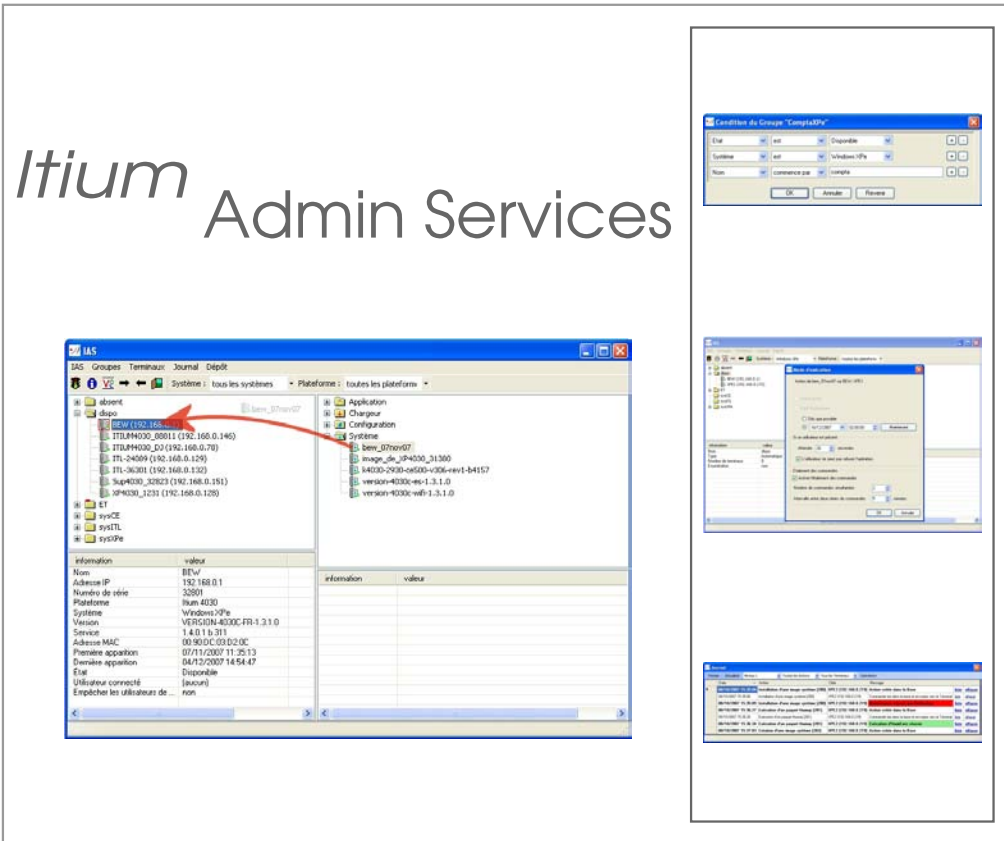


Itium Admin Services



Centralised administration console for Itium thin clients

Distributed architecture for easier deployment, configuration management and updates to all the ranges of Itium thin clients, whatever the kernel operating system.

Complete and Intuitive

Supplied free with Itium thin clients

CENTRALISED ADMINISTRATION FOR HETEROGENEOUS THIN CLIENT INSTALLATIONS

Itium Admin Services (IAS) is a centralised administration solution designed to speed up, simplify and control the management and updating of extensive Itium thin client installations, whatever the kernel operating system installed on the terminals (Windows CE, Windows XP Embedded or Linux).

Supplied free of charge with Impact Technologies Itium range of thin clients, Itium Admin Services allows administrators to manage everything remotely: terminal configurations, user parameters, updates to the applications or kernel operating system, replacement of one application by another (including the Java virtual machine with Linux and Windows XPE), etc.

DISTRIBUTED ARCHITECTURE

Itium Admin Services is based on an entirely distributed architecture. The solution includes a Microsoft SQL Express

database for storing the status of the Itium thin clients, groups, configuration parameters and events logs, a Windows service for executing the scheduled tasks, a FTP server for updating the Itium thin clients, and a client administration interface independent of the service. This distributed architecture allows multiple administrators to access all the thin clients (on- and off-line) configuration data.

SAVINGS IN TERMS OF TIME AND BANDWIDTH

Itium Admin Services integrates a cloning technology for the kernel operating system and configuration which makes backups and unlimited duplication of customised configurations far easier. This function allows the deployment of application or firmware updates on all or some of the thin client terminals to be speeded up. In distributed or multi-site organisations, updates can be made available on a local FTP server to reduce their impact on the network.

STRONG POINTS

- Ergonomic graphic interface
- Tree-structure architecture for instant access to information
- Unified management of terminals, whatever the operating system
- Management of groups and sub-groups of terminals
- Display of terminals on line in real time
- Support of the Itium thin clients installed behind a router or an ADSL modem
- Operating kernel and configuration cloning technology
- Scheduling of updates
- Reduced impact of updates on the network
- Delegation of administration rights
- Complete traceability of operations carried out

FLEXIBILITY AND ADAPTABILITY

At the forefront of the thin client market, Impact Technologies has developed advanced skills in working with Windows CE, Windows XPE and Linux (distribution ITLinux) kernel operating systems, so that specific configurations can be produced, even in small volumes. With the Itium range, it is the thin client which adapts to the company's needs and not the other way round. With Itium Admin Services, Impact Technologies supplies all the functions for easier management of hard and software that can be fully customised according to the requirements of the business in question.

TECHNICAL CHARACTERISTICS

MAIN FUNCTIONS	Centralized administration	Unified management of Itium thin clients with Windows CE, Windows XPE or Linux
	Management of the installation base	Database for all the thin clients Display of the hard and software characteristics of each terminal (on and off-line) Management of customisable groups and sub-groups Request editor to sort the terminals (by type, group, site, fonction, etc.) Display of thin clients connected in real time
	Configuration management	Quick access to the configuration data for each terminal Cloning and kernel image duplication functions Management of configuration versions
	Deployment and updates made automatic	Windows Service Scheduling of client updates Updates using a remote or local FTP server for reduced impact on the network
	Traceability	Storage of all the hard and software configuration parameters, versions and events logs in a Microsoft SQL Express database
	Client console	Ergonomic graphic interface Addition of terminals, deployment and updates by simple "drag and drop" Simultaneous access for delegated administrators in multi-site mode Remote overriding (VNC) to help the user.
CONFIGURATION REQUIRED	Hardware	Processor: Pentium III or above, minimum 500 Mhz (1 GHz recommended) RAM (recommended): 512 MB or more Disk capacity: 600 Mb available
	Operating system	Windows Server 2003 SP1, XP SP2 or Vista
	Software	Microsoft .NET Framework 2.0 or above