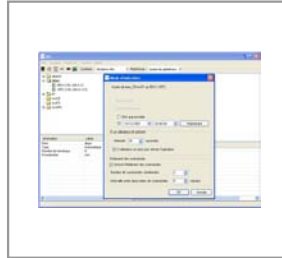


Itium Advanced



*The benefits of a thin client
and a PC, all rolled into one
hardware*

*Powerful, flexible and
reliable*

*Available with
Windows Embedded
and Linux*

Ultra powerful thin client

The graphical fluidity, processing power and flexible use of a PC.

The ease of deployment, administration and reliability of a thin client.

THE SAME USER EXPERIENCE AS A PC

Itium Advanced comes with a powerful processor, an extended connectivity and an integrated DVD player, ensuring quick access to graphic, multimedia, VoIP applications, etc. and support for many peripherals (smart card reader, USB printers, touch screens, barcode readers, etc.).

To enhance flexibility of use, the Disk on Module memory can be split into two partitions, one for the image of the operating system and modules of professional applications, and the other to store user data.

As a result, Itium Advanced extends the use of thin computing to hospital, sales point, interactive terminal applications...

RELIABLE AND NOISELESS

Just like any thin client terminal, Itium Advanced has no hard disk and is fanless, with the following major benefits: a noiseless work environment, with lower footprint, failure rate, power consumption and heat generation than a PC.

CENTRALIZED ADMINISTRATION

The Itium Advanced workstations only run display, network management and user interface functions.

All the applications and processing are running on a centralized server, facilitating data management and securing, as well as applications and operating systems administration and upgrades.

With the Itium Admin Services (IAS) administration solution, supplied free of charge with the Itium thin clients, administrators can manage everything remotely: configuration of user parameters, scheduled updates to applications or the kernel operating system, replacement of one application by another.

100% ADAPTABLE

Itium Advanced boasts Impact Technologies expertise in terms of personalisation of the Windows Embedded and Linux (distribution ITLinux) kernel operating systems, so that specific configurations can be produced, even in small volumes. With the Itium range, it is the thin client which adapts to the company's needs and not the other way round.

STRONG POINTS

MATÉRIEL

- Powerful (Intel dual core processor)
- Support for high-definition screen resolution
- Possibility of allocating storage space for user data
- Built-in SATA 8.0 x dual layer DVD burner and writer
- Extended connectivity: Gigabit Ethernet, 6 USB ports 2.0, 1 parallel port, 1 serial port...
- Free PCI slot as standard
- Natural convection cooling system

SOFTWARE

- Customisable operating system (Windows Embedded Standard or Linux)
- Integrated browser (Internet Explorer 7 or Firefox 3.5)
- Integration of office and/or professional applications on request
- Free choice of protocol (RDP or ICA)
- Local management of serial ports
- Integrated VPN, PPPoE clients
- SNMP support

OPTIONS

- Wifi 802.11 a/b/g/n
- Terminal emulation pack (Emulations: 5250, 3270, VTxx, HP/UX, SCO Console, etc)
- Integration of an additional periphery (communication port, etc)
- Dual screen
- PS2 keyboard/mouse pack
- Disk on Module & DDRAM extension, with or without partition data
- 1 or 2-year extended warranty



TECHNICAL CHARACTERISTICS

	Itium Advanced XPE	Itium Advanced ITL	
SOFTWARE	Embedded software / Firmware characteristics	Windows Embedded Standard Internet Explorer 7	ITLinux (kernel 2.6) Firefox 3.5
	Compatibility with the major server operating systems and hypervisors of the market	Microsoft Windows 2000/2008 Terminal Services, Windows XP, Windows Server Hyper-V, Citrix Metaframe XP, NFuse et XenServer, VMware ESX Server, Oracle VM	
	Administration software	Itium Advanced is supplied with Itium Admin Services (IAS), a centralised administration solution for its Itium thin clients, whatever the kernel operating system.	
HARDWARE	Microprocessor	Processor : Intel Atom 330 Dual Core 1,6 GHz	
	Memory	RAM: 1 GB (expandable to 2 GB) Disk on Module memory: 4 GB (expandable to 80 GB via hard disk 2.5")	
	Input/output and peripheral support	6 USB ports 2.0, 1 parallel port, 2 x PS/2 ports (keyboard and mouse), 1 VGA output, 1 serial output 115.200 bauds DB9 connector, 1 audio jack (O) and 1 microphone (I)	
	Bus extension	1 PCI extension slot as standard	
	Network	Gigabit Ethernet port: twisted pair, RJ45 connector	
	Video	Maximum resolution 2048 x 1536 Refresh speed: up to 85 Hz	
	Audio / CD	1 stereo 16 bit 44 Khz line output, 1 microphone input Built-in SATA 8.0 x dual layer DVD burner and write	
	Dimensions and weight	H: 203 - L: 240.5 - D: 53 (mm) - Weight: 2.1 kg	
	Power supply	External power supply – Mains adaptor (100 to 240 V)	
	Compliance with regulations	EMI certification: EC - Complies with RoHS standard	
	Environnement	Temperature: operating, between 5 ° and 40 °C Storage from -10 °to 60°C - Humidity: 90% maximum with no condensatione	
	Garantie	3 years, return to Impact Technologies	