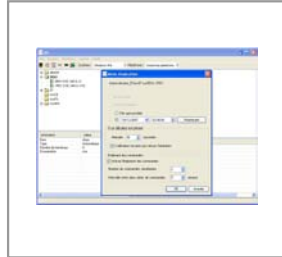


Itium 2910



A thin client for less than €200 exc. tax for quick access to applications based on Windows, Unix/Linux or mainframe iSeries, zSeries servers.

***Economic
and reliable***

**Available with
Windows
Embedded CE
and Linux**

Windows and Linux thin client

SIMPLE, ROBUST AND ECONOMIC

Available under Windows Embedded CE and Linux, the Itium 2910 combines ease of use, reliability and simple administration all for under 200 euros. It integrates a complete version of an Internet browser, Explorer 6 or Firefox 3.0, allowing all applications based on Windows, Unix/Linux, iSeries or zSeries servers to be quickly accessed using Microsoft RDP or Citrix ICA protocols. The Itium 2910 also has 4 USB ports to run desktop or industrial peripheral devices (USB keys or printers, barcode scanners...) and is supplied with a space-saving VESA bracket to mount the thin client on rear of a flat screen.

100% ADAPTABLE

Like all Impact Technologies range thin clients, the Itium 2910 is designed to provide companies with robustness and flexibility in hardware and software configurations which can be fully personalised according to businesses requirements. At the forefront of the thin client market, Impact Technologies has

developed advanced skills in working with Windows Embedded and Linux (distribution ITLinux) kernel operating systems so that specific configurations can be produced, even in small volumes. With the Itium range, it is the thin client which adapts to the company's needs and not the other way round.

ADMINISTRATION MADE SIMPLE

When you choose Impact Technologies, you also choose to be independent. With the Itium Admin Services (IAS) administration solution, administrators can manage everything remotely: configuration of user parameters, scheduled updates to applications or the kernel operating system, replacement of one application by another. Impact Technologies thin clients also benefit from a 3-year guarantee with (optional) early exchange on site, in order to keep costs down while offering optimum availability to the final users.

STRONG POINTS

HARDWARE

- Second-to-none value for money and robustness
- Compact and lightweight
- VESA mount adapter kit, to mount the thin client on rear of a flat screen
- Natural convection cooling system

SOFTWARE

- Customisable operating system (Windows Embedded CE or Linux)
- Integrated browser (Internet Explorer 6 or Firefox 3.5)
- X.11 client (with Linux)
- Free choice of protocol (RDP or ICA).
- Generic USB drivers
- Integrated VPN, PPPoE clients
- SNMP support

OPTIONS

- Wifi 802.11 a/b/g/n
- Terminal emulation pack (Emulations: 5250, 3270, VTxx, HP/UX, SCO Console, etc)
- USB keyboard/mouse pack
- 1 or 2-year extended warranty



TECHNICAL CHARACTERISTICS

SOFTWARE

	Itium 2910 CE	Itium 2910 ITL
Embedded software / Firmware characteristics	Windows Embedded CE Internet Explorer 6	ITLinux (kernel 2.6) Firefox 3.5
Compatibility with the major server operating systems and hypervisors of the market	Microsoft Windows 2000/2008 Terminal Services, Windows XP, Windows Server Hyper-V, Citrix Metaframe XP, NFuse and XenServer, VMware ESX Server, Oracle VM	
Administration software	Itium 2910 is supplied with Itium Admin Services (IAS), a centralised administration solution for its Itium thin clients, whatever the kernel operating system	

HARDWARE

Microprocessor	Processor: AMD GEODE GX2 high integration
Memory	RAM: DDR 256 MB - DOM 128 MB
Input/output and peripheral support	4 USB ports (2 on front, 2 on back) 1 VGA output
Network	Ethernet 10/100 baseT port : twisted pair, RJ45 connector
Video	Support for analogue cathode tube and LCD screens. Maximum resolution 1600 x 1200 (4:3 aspect ratio monitors only) Refresh speed: up to 85 Hz
Audio	1 stereo 16 bit 44 Khz line output, 1 microphone input
Keyboard / Mouse	Support for USB keyboards and mouse devices
Dimensions and weight	H : 190 - L : 142 - D : 36,5 (mm) - Weight: 0,735 kg
Assembly	VESA mounting bracket (75/100 mm)
Power supply	External power supply - Automatic 100 V to 240 V / 50Hz - 60 Hz
Compliance with regulations	EMI certification: EC - Complies with RoHS standard
Environment	Temperature: operating, between 5 ° and 40 °C Storage from -10 °to 60°C - Humidity: 90% maximum with no condensation
Warranty	1 year, return to Impact Technologies